

# Diaphragm Seal

4026/60 flange SMS with flush diaphragm  
with pressure gauge

E 06.03.01

Ed.18.01

<b>Design</b>	Diaphragm seal with flush diaphragm and flange Ø 60 mm according to SMS. Stainless steel pressure gauge
<b>Type</b>	<b>4026/60</b>
<b>Lower part</b>	Flush diaphragm and flange Ø 60 mm according to SMS
<b>Flange</b>	Dimension 100x12,5 mm Diaphragm Ø 60 mm for process Drill holes 6 x Ø 9 mm dim Ø 83 mm Sealing face form B2
<b>Pressure rate</b>	PN 40 for pressure ranges 0-1,6 bar to max 0-40 bar
<b>Material standard</b>	Upper body in stainless steel 1.4404 (316L) Diaphragm in stainless steel 1.4435 (316) with ECFTE-coating
<b>Level of cleanliness</b>	Oil and grease free per ASTM G93-03 level E (< 550 mg/m <sup>2</sup> )
<b>Working Pressure</b>	90% of full scale range by fluctuating pressure full scale value by short time pressure
<b>Process temperature</b>	Process temperature max +150°C
<b>Ambient temperature</b>	Ambient temperature standard +10+40°C Option lowest temperature to max -40°C Option highest temperature to max +60°C
<b>Cooling/capillary</b>	The pressure instrument must be protected in process temperatures over +200°C with cooling tower or capillary
<b>Filling media</b>	KN 2 silicone oil (standard) temperature -45+300°C KN 17 silicone oil for low temperatures -90+200°C KN 32 silicone oil for high temperatures -25+400°C KN 21 halocarbene for oxygen and chlorine -60+175°C KN 70 silicone free filling -20+200°C KN 59 Neobee M-20 FDA (Food & Pharma) -35+260°C KN 92 white mineral oil FDA (Food & Pharma) -15+260°C
<b>Certificate (option)</b>	EN 10204-3.1 Certificate wetted parts incl. chemical analysis EN 10204-3.1 Certification of class and accuracy EN 10204-3.1 Accuracy calibration values listed EN 10204-3.1 Pressure and stability test EN 10204-3.1 Helium leak test
<b>More options</b>	Monterad syrafast TAG-bricka med ingravering Wetted parts with PFA-coating Wetted parts in Hastelloy, Tantal or Duplex



Diaphragm seal 4026/60  
pressure gauge type 2940

# Diaphragm Seal

4026/60 flange SMS with flush diaphragm  
with pressure gauge

E 06.03.01

## Pressure gauges for mounting with diaphragm seal 4026/60



### Stainless steel version

Case of stainless steel dim 100 mm, wetted parts of stainless steel  
Accuracy Cl.1,0%, pressure range max 250 bar  
Ingress protection IP 65 EN 60529/IEC 529  
Pressure limitation 90% of full scale value by fluctuating pressure

**2840** = lower mount - standard without case filling

**2841** = back mount - standard without case filling

**2940** = lower mount - with liquid filled case (glycerine)

**2941** = back mount - with liquid filled case (glycerine)

**2880** = with vibration damped movement



### Stainless steel safety version

Case of stainless steel dim 100 mm, wetted parts of stainless steel  
Safety version EN 837-1 (S3) with safety wall behind the scale  
Accuracy Cl.1,0%, pressure range max 250 bar  
Ingress protection IP 65 EN 60529/IEC 529  
Pressure limitation 90% of full scale value by fluctuating pressure

**232.30** = standard without case filling

**233.30** = with liquid filled case (glycerine)



### With electrical switch

Case of stainless steel dim 100 mm, wetted parts of stainless steel  
Safety version EN 837-1 (S3) with safety wall behind the scale  
Accuracy Cl.1,0%, pressure range max 250 bar  
Ingress protection IP 65 EN 60529/IEC 529  
Pressure limitation 90% of full scale value by fluctuating pressure

Magnet spring switch 821 or inductive switch 831

Single switch with function max or min

Double switch with function max-min, min-max, 2x max or 2x min

**PGS23.100** = case with or without liquid filled case

## Options for pressure gauges



- Dial with unit bar/Pa, bar/psi, kPa, MPa, psi
- ATEX protection c with device cat 2G/2D
- Design acc.to NACE Sour Gas Service
- Design Oxygen Oil- and Grease free
- Silicone free version
- Dial with colored fields or customer logo
- Ingress protection IP 66 or IP 67
- Case in stainless steel 316 Ti
- Case polished
- Case epoxy-coated
- Case PTFE-coated
- Liquid filled case silicone M50 for low ambient temperatures

# Diaphragm Seal

4026/60 flange SMS with flush diaphragm  
with pressure gauge

E 06.03.01

## Standard design 4026/60 with pressure gauge

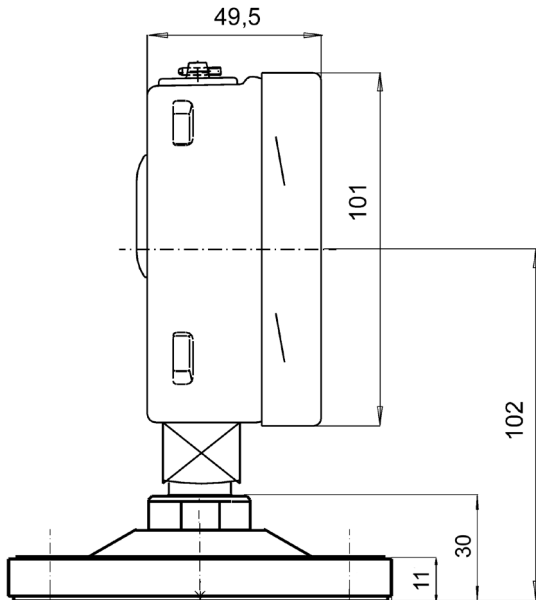
4026/60 acc.to SMS <b>flange DN 60</b> pressure rating PN 40 process temperature +150°C stainless steel with ECTFE-coating filling KN 2 silicone oil  <b>Stainless steel pressure gauge</b> 2940.100 liquid filled lower mount 2941.100 liquid filled back mount		
	<b>Lower mount</b>	<b>Back mount</b>
	Wetted parts <b>ECTFE-coating</b>	Wetted parts <b>ECTFE-coating</b>
<b>Pressure range</b>	<b>Code</b>	<b>Code</b>
0-1,6 bar	40267003	40267203
0-2,5 bar	40267004	40267204
0-4 bar	40267006	40267206
0-6 bar	40267007	40267207
0-10 bar	40267008	40267208
0-16 bar	40267011	40267211
0-25 bar	40267013	40267213
-1/+1,5 bar	40267066	40267266
-1/+3 bar	40267067	40267267
-1/+5 bar	40267068	40267268
-1/+9 bar	40267069	40267269

# Diaphragm Seal

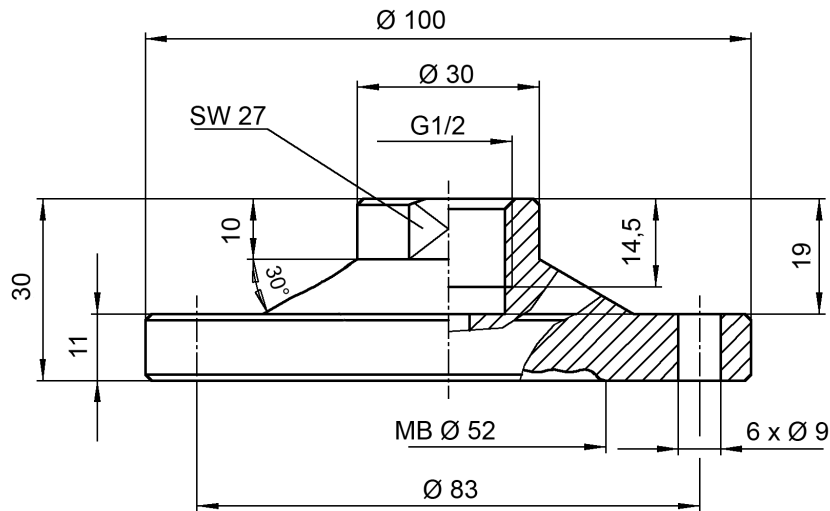
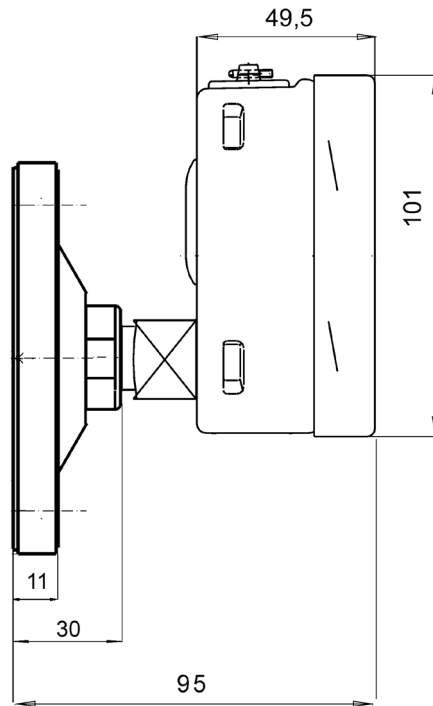
4026/60 flange SMS with flush diaphragm  
with pressure gauge

E 06.03.01

Lower mount



Back mount

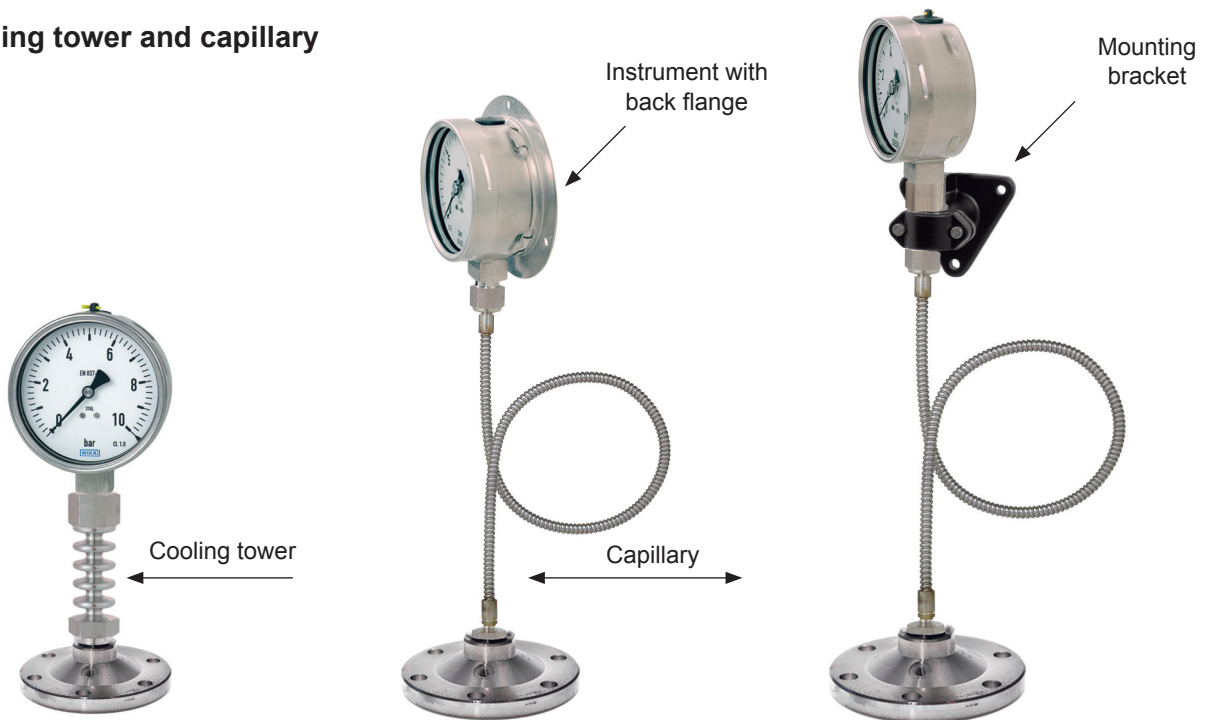


# Diaphragm Seal

4026/60 flange SMS with flush diaphragm  
with pressure gauge

E 06.03.01

## Cooling tower and capillary



### Cooling tower

Cooling tower is mounted to protect the pressure instrument from high process temperature. Air circulation through the perforated capillary protector reduces the temperature of the filling liquid. Material stainless steel. Length: 116,5 mm

### Capillary

Stainless steel capillary with stainless steel spiral armour provides connection between chemical seal and pressure instrument to enable distant reading or remote control. Capillary lengths from 0,5 meter to max 10 meter.

### Mounting of pressure gauge

Alternative 1 = Pressure gauge with back flange for wall mounting

Alternative 2 = Mounting bracket in aluminium or stainless steel for wall mounting

### Weld-in flange 8500

Weld-in flange 8500 can be delivered as option.

Material: Stainless Steel 316L, Sealing viton

Complete with boltings

Material certificate

Code: **85000000**

